

Original

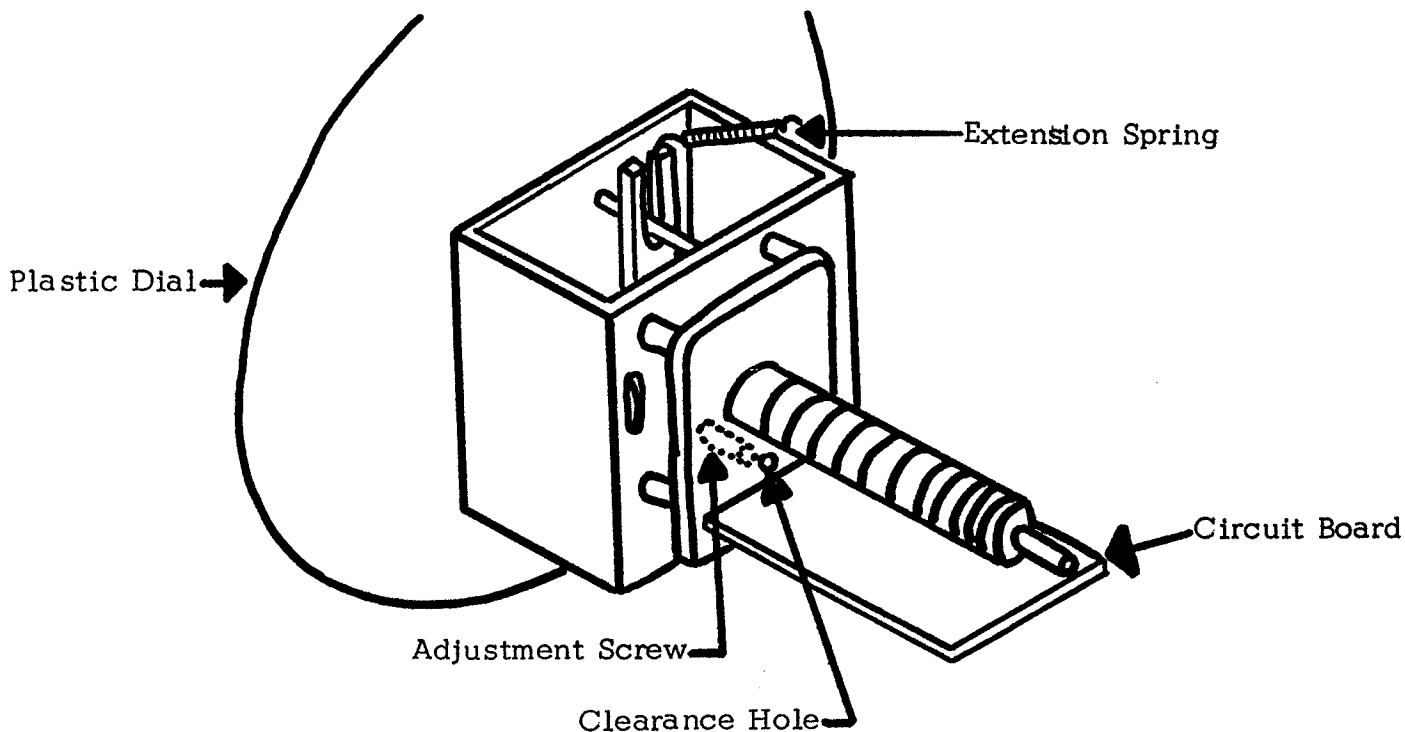
PTO MAIN BEARING ADJUSTMENT

COVER REMOVAL

Release the cover end of the extension spring shown in drawing. Using a flat bladed screwdriver, carefully release the cover retaining clips from the PTO bracket. If excessive force is applied, these clips will be bent out of shape and will not securely hold the PTO cover. Adjust the main tuning knob until the frequency dial reads 3.5 mc. With the retaining clips now free, move the cover straight back until the brass PTO slug shaft is cleared. CARE SHOULD BE TAKEN NOT TO REPOSITION ANY COMPONENT OR WIRE WHICH WAS COVERED, SINCE THIS WILL RESULT IN NON-LINEAR PTO TRACKING.

BEARING ADJUSTMENT

Carefully insert the supplied Allen wrench through the clearance hole and into the adjustment screw located between the PTO coil and circuit board. To increase bearing pressure, turn the wrench CW (clockwise) until a satisfactory knob torque is reached. Over tightening the adjustment screw must be avoided or bearing damage will result.



After removing the Allen wrench, carefully snap the PTO cover into position and replace the extension spring.